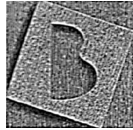


super bright™ wash



BRIGHTMAN DESIGN

SANTA CRUZ - U S A

tel: 800 995 1723

INSTRUCTIONS  www.brightmandesign.com

SAFETY FIRST:

Lighted halogen lamp is HOT!

WARNING - To reduce the risk of FIRE, ELECTRIC SHOCK, OR INJURY TO PERSONS:

1. Turn off/unplug and allow to cool 20 min. before replacing the bulb.
2. Bulb gets HOT quickly! Contact only plug when turning on.
3. Do not touch hot lens, guard or enclosure.
4. Do not remain in light if skin feels warm.
5. Do not look directly at ighted bulb.
6. Keep lamp away from materials that may burn.
7. To TURN ON LIGHT plug into a grounded 120volt 60 hz. outlet or circuit protected plugging strip .
8. These components are for indoor use only.
9. Mount only to mechanically sound surfaces.

NEW FIXTURES MAY GIVE OFF SMOKE AT LIGHTHEAD FOR 10 - 15 MINUTES. THIS IS NORMAL !

Clamp:

The arm adjusts in clamp with thumbscrew. (fig 1 & 2) Clamp attaches to tubes up to 1-3/4" dia. Optional over sized clamp available, to attach to a tube from 1-3/4" to 2-1/2" or to a wall up to 4" thick.

Lamping:

Remove the shatter shield by turning the 2 bracket screws (fig. 3 - 4)

Insert the bulb into socket over "ball pins" for secure connection. (fig. 5) Use only 100, 150 or 200 wt bulbs.

Mounting:

Clamp is Designed for securely attaching to pipes up to 1-3/4" dia. Optional over sized clamp available, designed to attach to a pipe from 1-3/4" to 2-1/2".or to a wall from 1-5/8" to 4" thick

Fix to a stable surface. Injury to persons and damage to the lamp and/or mounting surface may result if the lamp is pulled from the surface.

Focusing the light:

The direction of the light should be adjusted immediately after switching on as fixture becomes hot quickly.

Restoring:

Allow lamp to cool for 5 minutes before replacing into packaging.

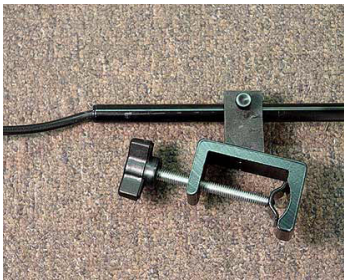


fig. 1

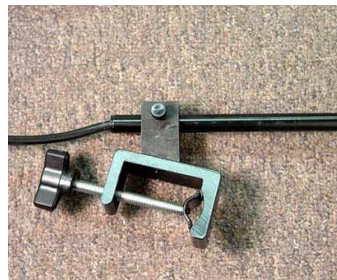


fig. 2



fig. 3

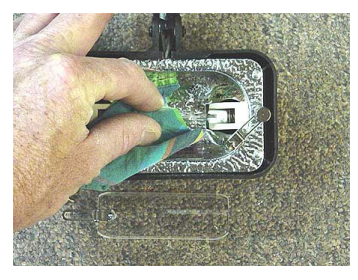


fig. 4



This display light is designed for use by exhibit professionals only. Please take a moment to read ALL of the following information...

This product is guaranteed for the period of one year from date of purchase against defects in workmanship or materials.

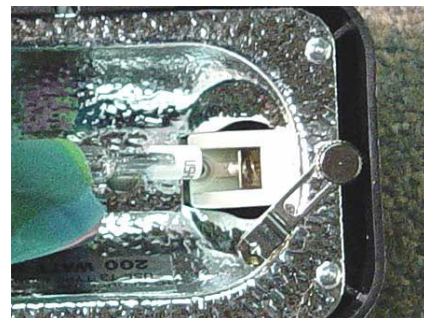


fig. 5

SAVE THESE INSTRUCTIONS